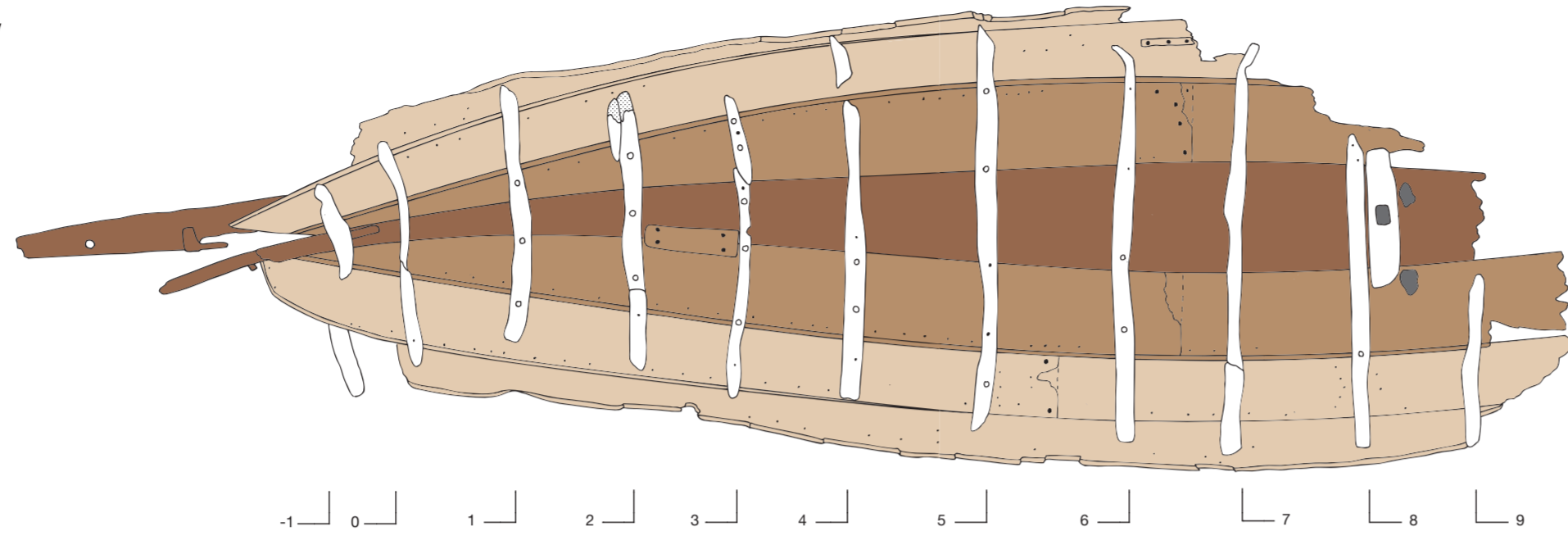
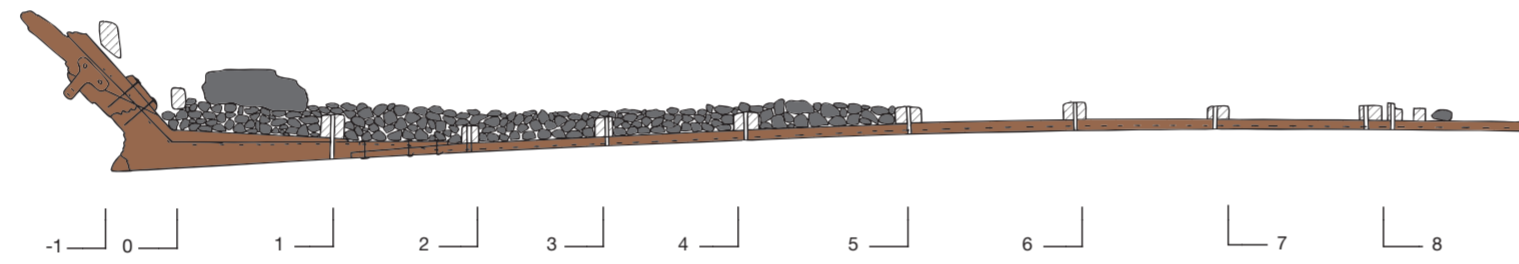


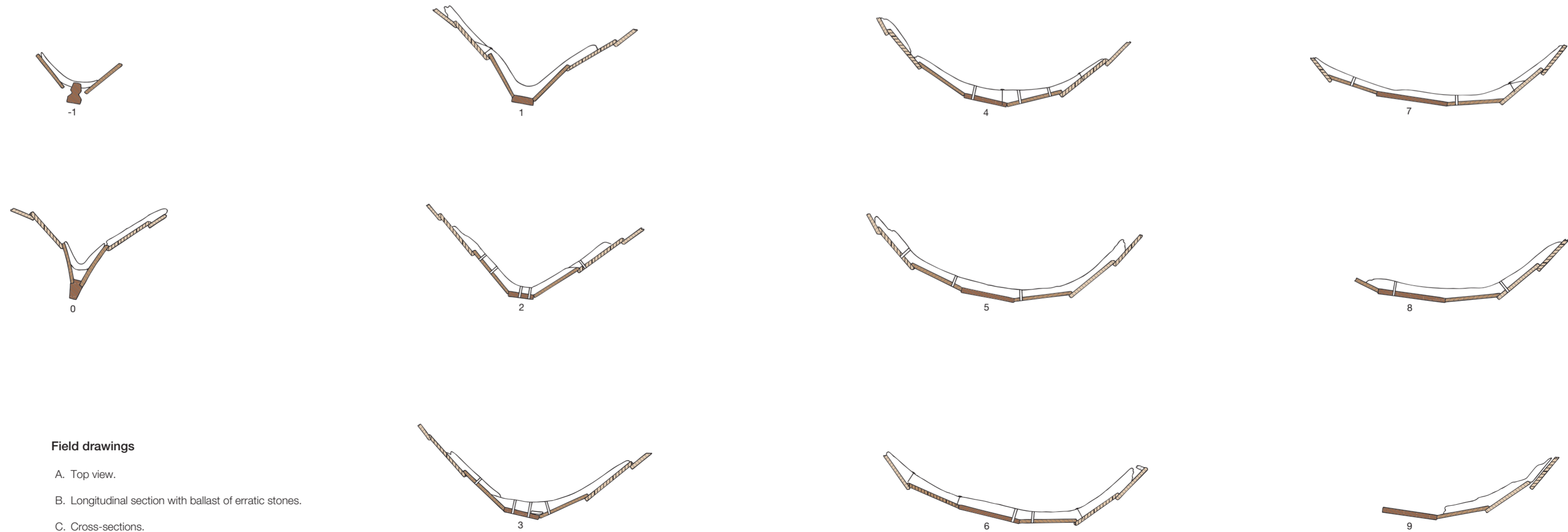
A. Top view



B. Longitudinal section



C. Cross-sections



Legend

- Keel plank, stern hook, sternpost, rudder
- Bottom planking
- Planking of the sides
- Frames, mast step
- Erratic stones / net weights
- Cross-cut wood
- Broken-off frame
- Frame number

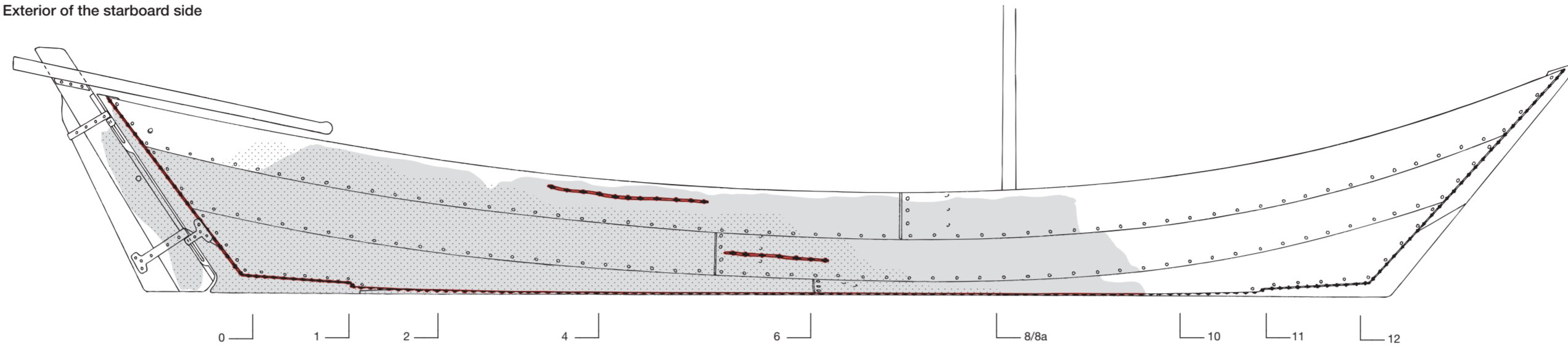
Field drawings

- A. Top view.
- B. Longitudinal section with ballast of erratic stones.
- C. Cross-sections.

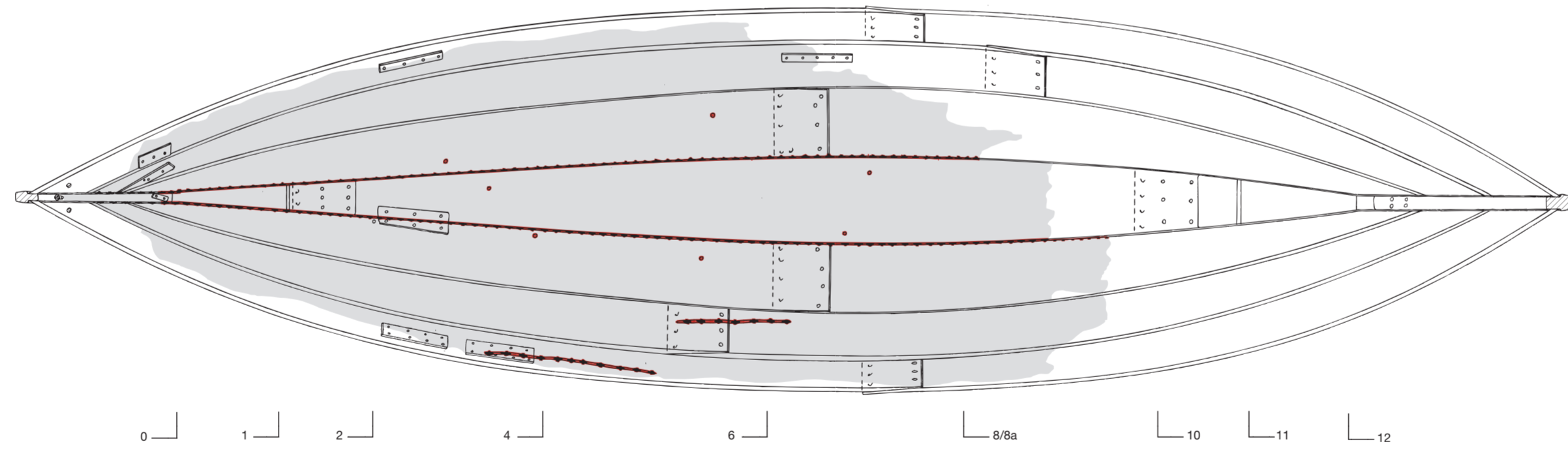
Scale

0 m 1 m

A. Exterior of the starboard side



B. Top view



Legend

- Recovered timbers of the starboard side (in A); all recovered parts (in B)
- Recovered timbers of the port side (in A)
- Clamped moss caulking in exterior cracks and in seams between the keel plank and the strakes
- Cross-cut wood
- Nail-hole plug left by temporary framing
- Frame number

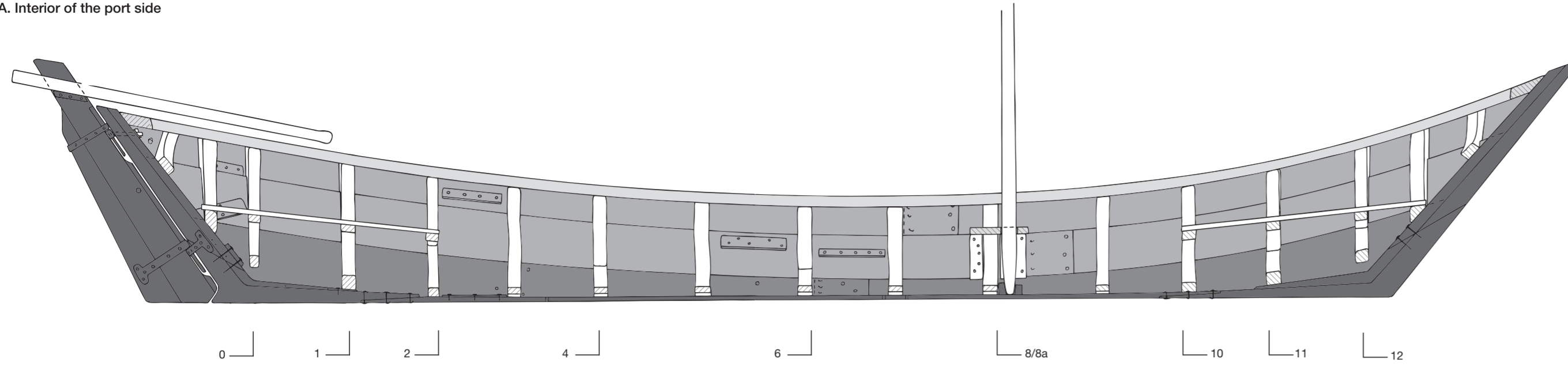
Reconstruction drawing

- A. Exterior of the starboard side, combining the recovered timbers of the starboard and port sides.
- B. Top view of the shell, showing the recovered timbers.

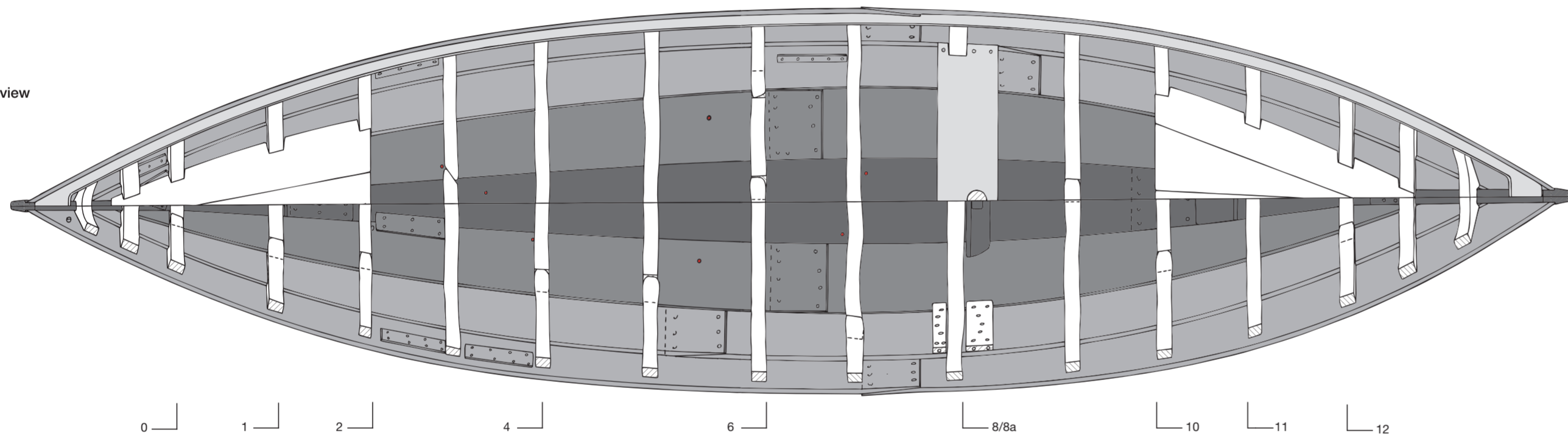
Scale



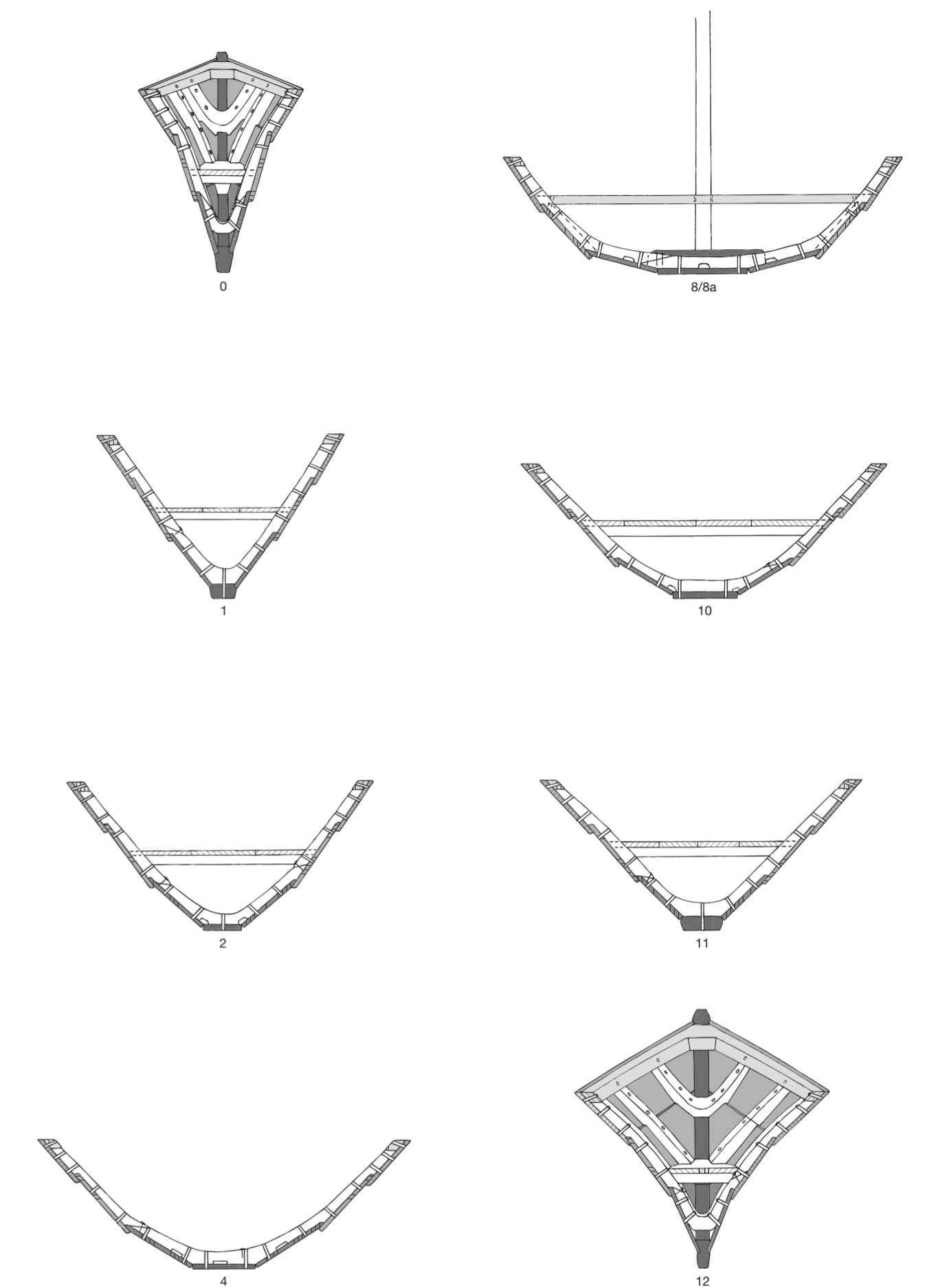
A. Interior of the port side



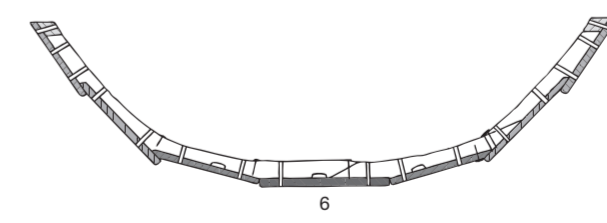
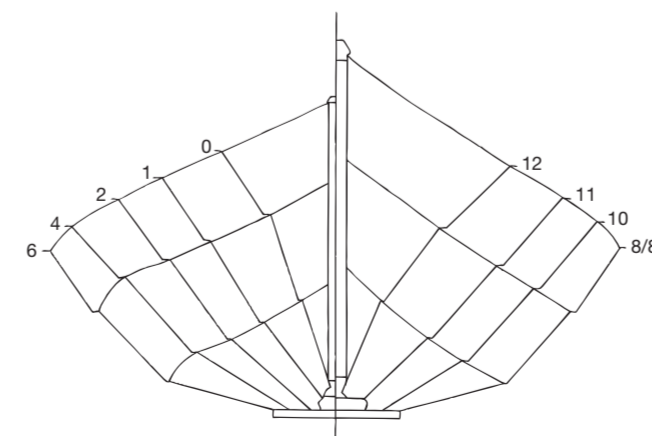
B. Top view



C. Cross-sections



D. Lines/planking drawing



Legend

- Keel plank, stern- and stem hooks, stern- and stemposts, mast step, rudder
- Bottom planking
- Planking of the sides
- Inwale, thwart
- Frames, decks, small deck beams, mast, tiller
- Cross-cut wood
- Repair plank
- Nail-hole plugs left by temporary framing
- Frame number

Reconstruction drawing

- A. Interior of the port side.
- B. Top view of the deck plan (port), and the frame plan (starboard).
- C. Cross-sections.
- D. Lines/planking drawing of the top edges of the shell strakes.
On the right, interior of the forebody; on the left, of the afterbody.

Scale

